

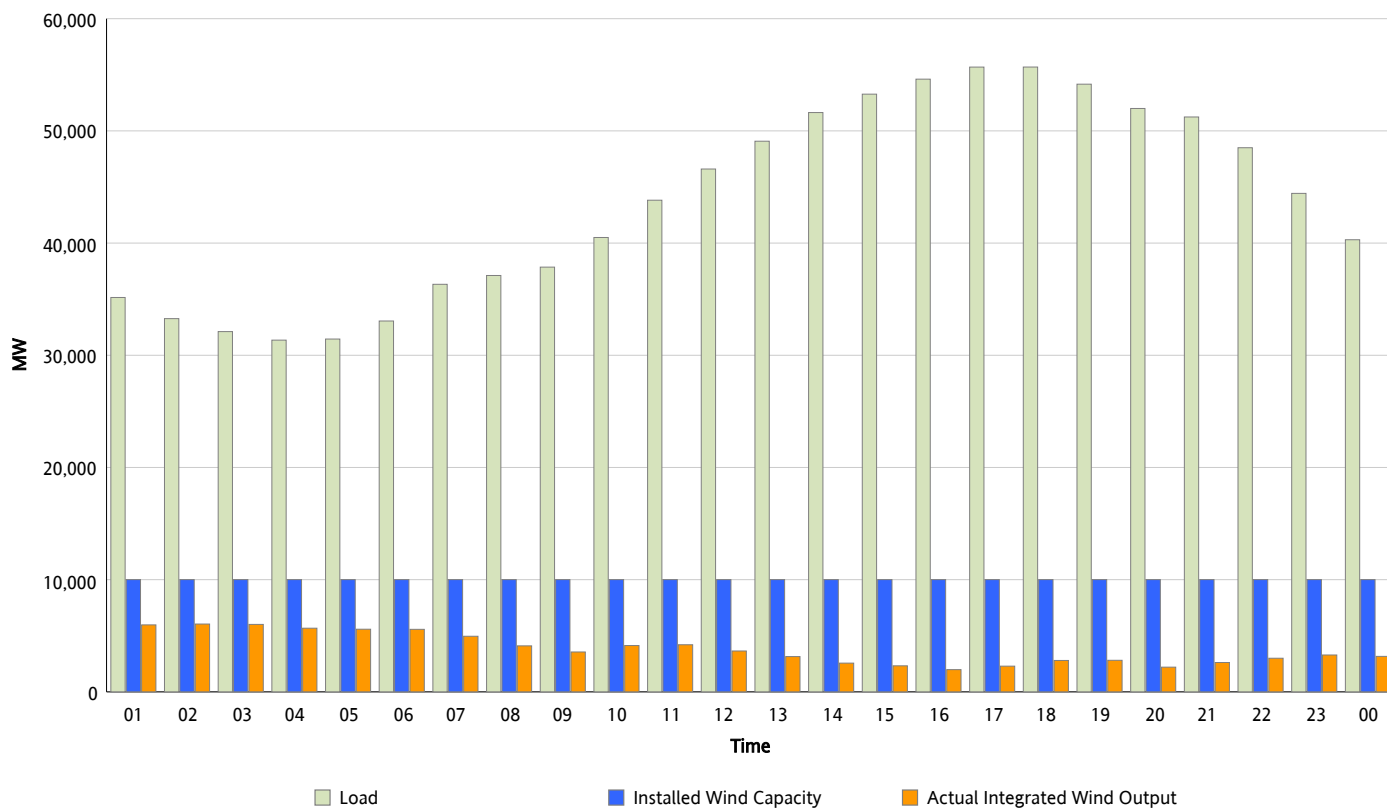


## ERCOT Grid Operations

### Wind Integration Report : 09/12/2012

|                      |           |
|----------------------|-----------|
| Peak Load            | 55,690 MW |
| Load Peak Hour (HE)  | 18        |
| Wind Over Peak       | 2,800 MW  |
| Wind Record 06/19/12 | 8,368 MW  |
| Max Wind Value*      | 6,160 MW  |
| Wind Peak Time       | 01:53     |
| Wind Integration %   | 18.82 %   |

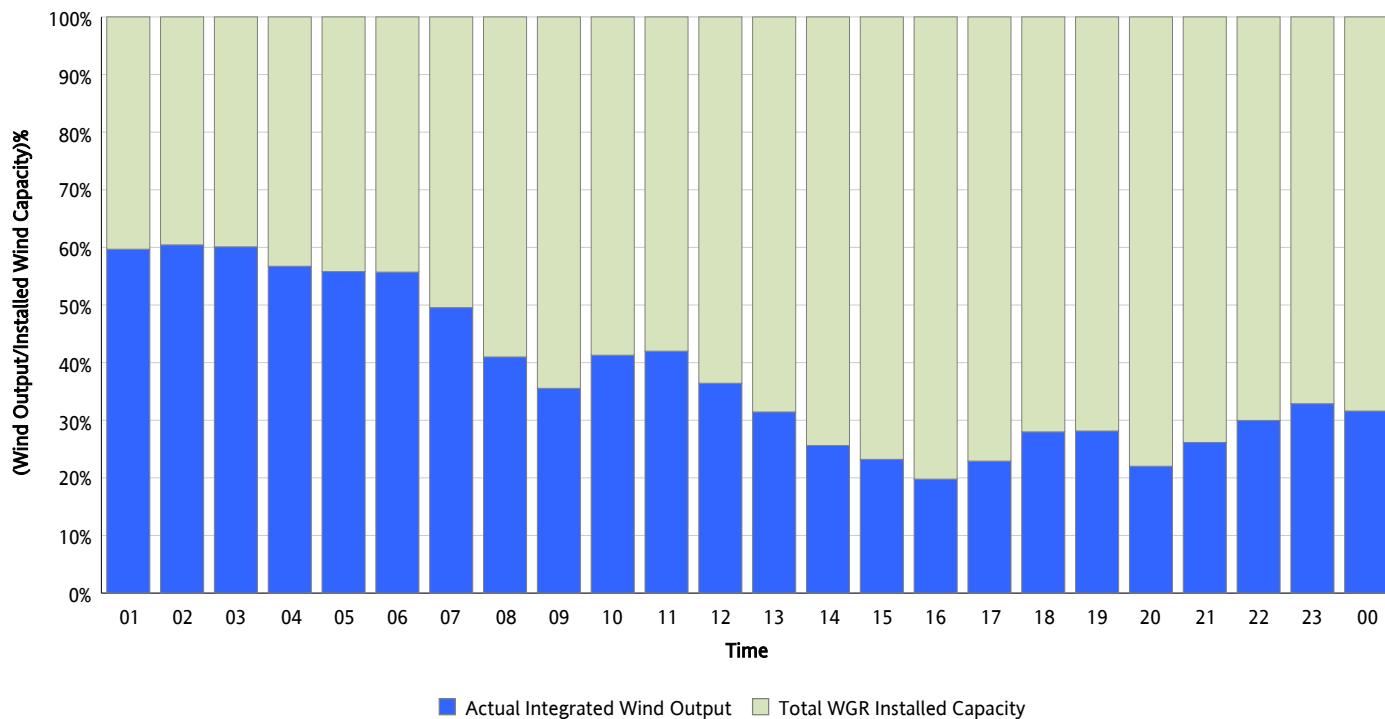
**Hourly Average Actual Load vs. Actual Wind Output**  
09/12/2012



\* Wind Record and Wind Max represent instantaneous values and the rest of the values are integrated over the hour

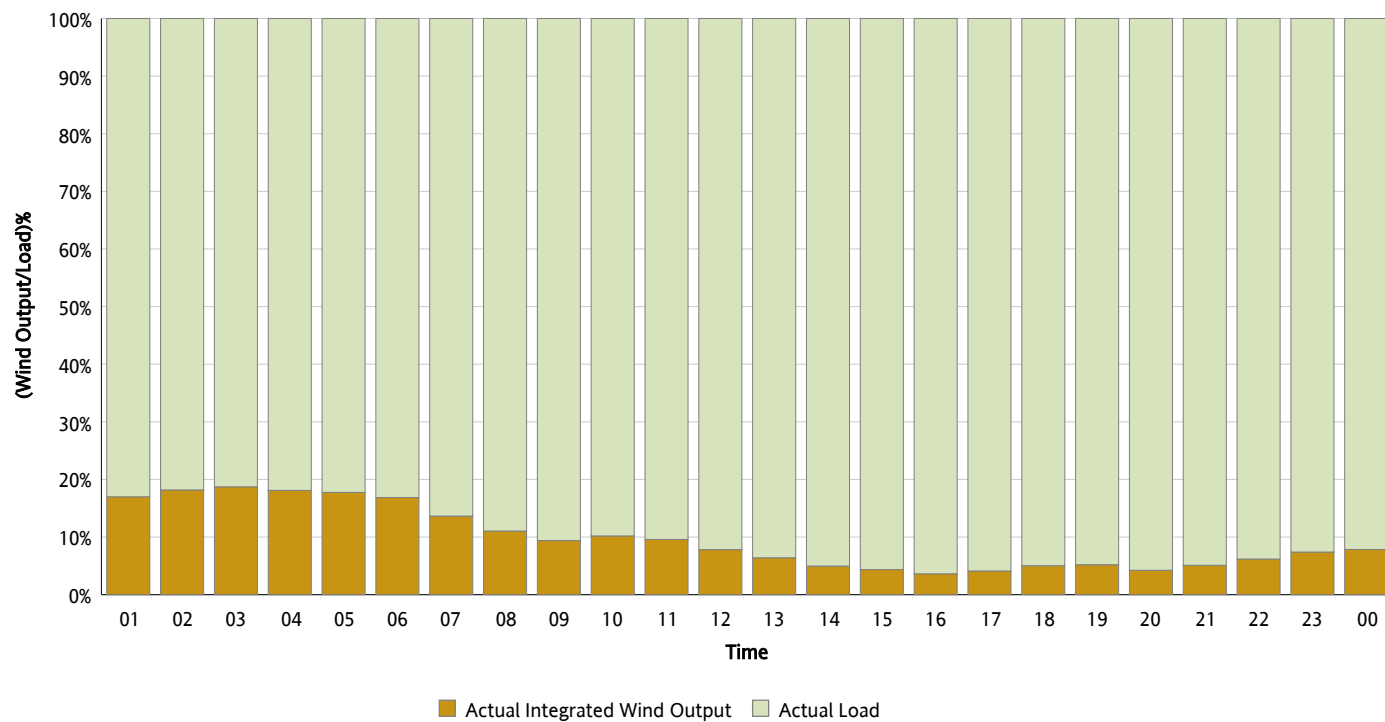
## Actual Wind Output as a Percentage of the Total Installed Wind Capacity

09/12/2012



## Actual Wind Output as a Percentage of the ERCOT Load

09/12/2012



## ERCOT Load vs. Actual Wind Output

09/05/2012 - 09/12/2012

